

LUX X 6pp gatefold specification January 2019

Cover section imposition - Inside

Trim / fold sizes

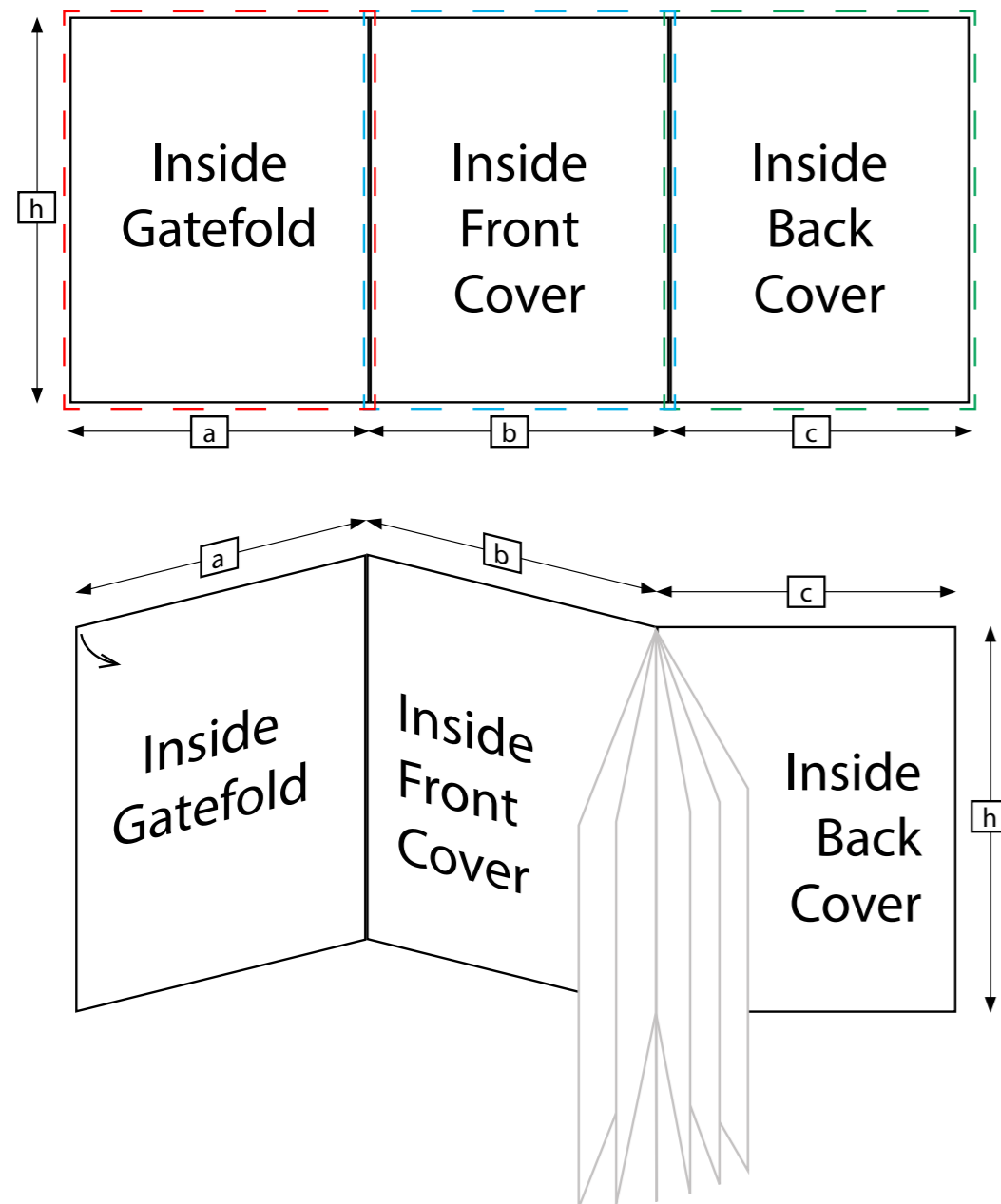
a = 270mm
b = 275mm
c = 280mm
h = 330mm

Inside Gatefold = 276 x 336mm [a x h + 6mm bleed]
Inside Front Cover = 281 x 336mm [b x h + 6mm bleed]
if supplied as a spread = 551 x 336mm [(a + b) x h + 6mm bleed]

Inside Back Cover = 286 x 336mm [c x h + 6mm bleed]

No live matter should be placed within 7mm of the trim

icc profile should be based on Fogra 39L dataset, 300% TAC eg. ISO Coated v2 300% (ECI)



Cover section imposition - Outside

Trim / fold sizes

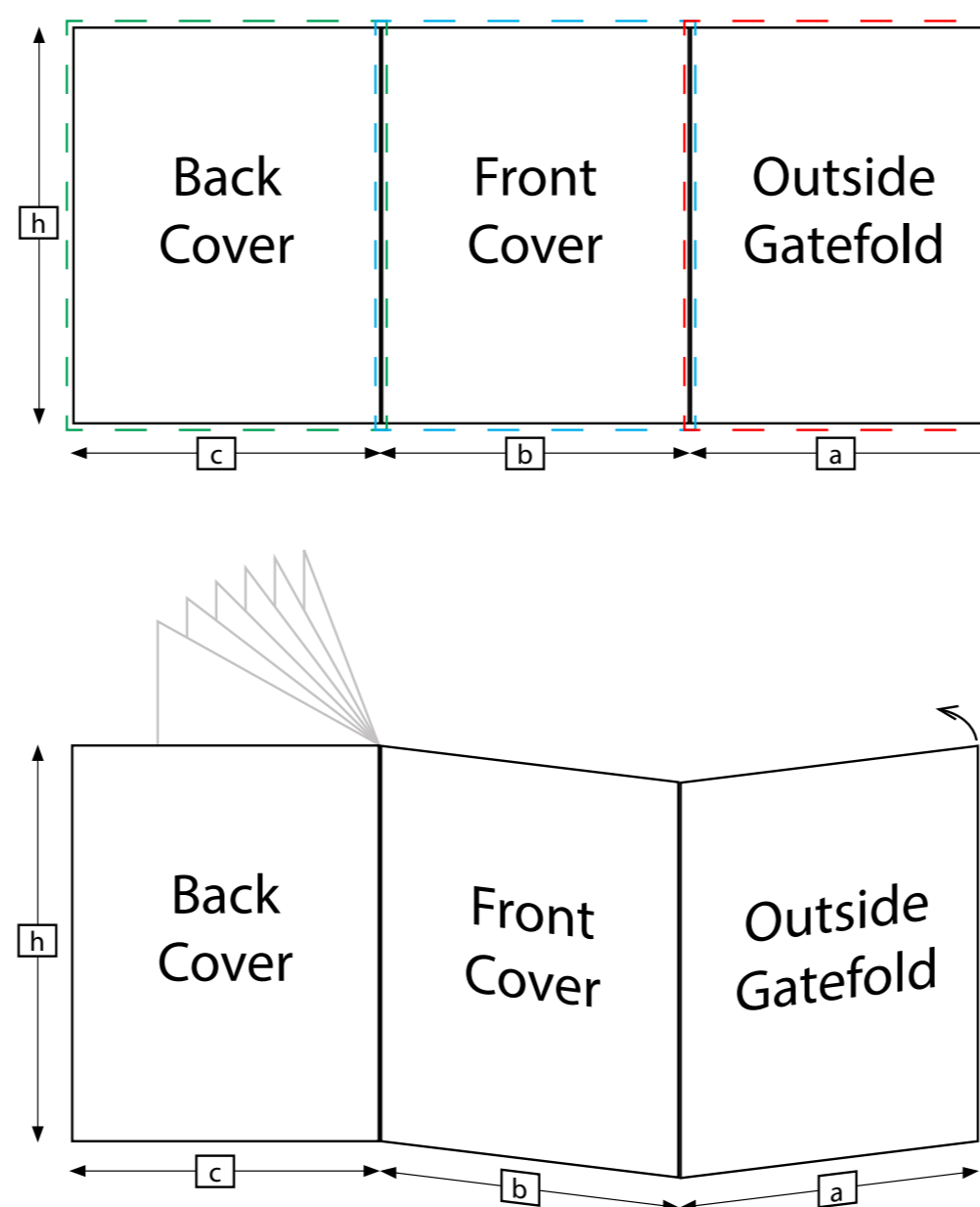
a = 270mm
b = 275mm
c = 280mm
h = 330mm

Outside Gatefold = 276 x 336mm [a x h + 6mm bleed]
Front Cover = 281 x 336mm [b x h + 6mm bleed]
if supplied as a spread = 551 x 336mm [(a + b) x h + 6mm bleed]

Back Cover = 286 x 336mm [c x h + 6mm bleed]

No live matter should be placed within 7mm of the trim

icc profile should be based on Fogra 39L dataset, 300% TAC eg. ISO Coated v2 300% (ECI)



Inside gatefold 3 page spread supply

When the booking includes Inside gatefold, Inside Front cover and the first text page (page 3), the file can be supplied as a 3 page spread.

It is also advisable to avoid placing important content in the gutter area where the gatefold and the first text page meet.

Trim / fold sizes

a = 270mm
b = 275mm
c = 280mm
h = 330mm

Inside Gatefold = 276 x 336mm [a x h + 6mm bleed]
Inside Front Cover = 281 x 336mm [b x h + 6mm bleed]
First text page = 286 x 336mm [c x h + 6mm bleed]
if supplied as a 3 page spread = 831 x 336mm [(a + b + c) x h + 6mm bleed]

icc profile should be based on Fogra 39L dataset eg. ISO Coated v2 300% (ECI) 300% TAC

No live matter should be placed within 7mm of the trim

