

# Saturday Times Magazine 6pp FRONT COVER gatefold specification October 2013

## Inside

Trim / fold sizes

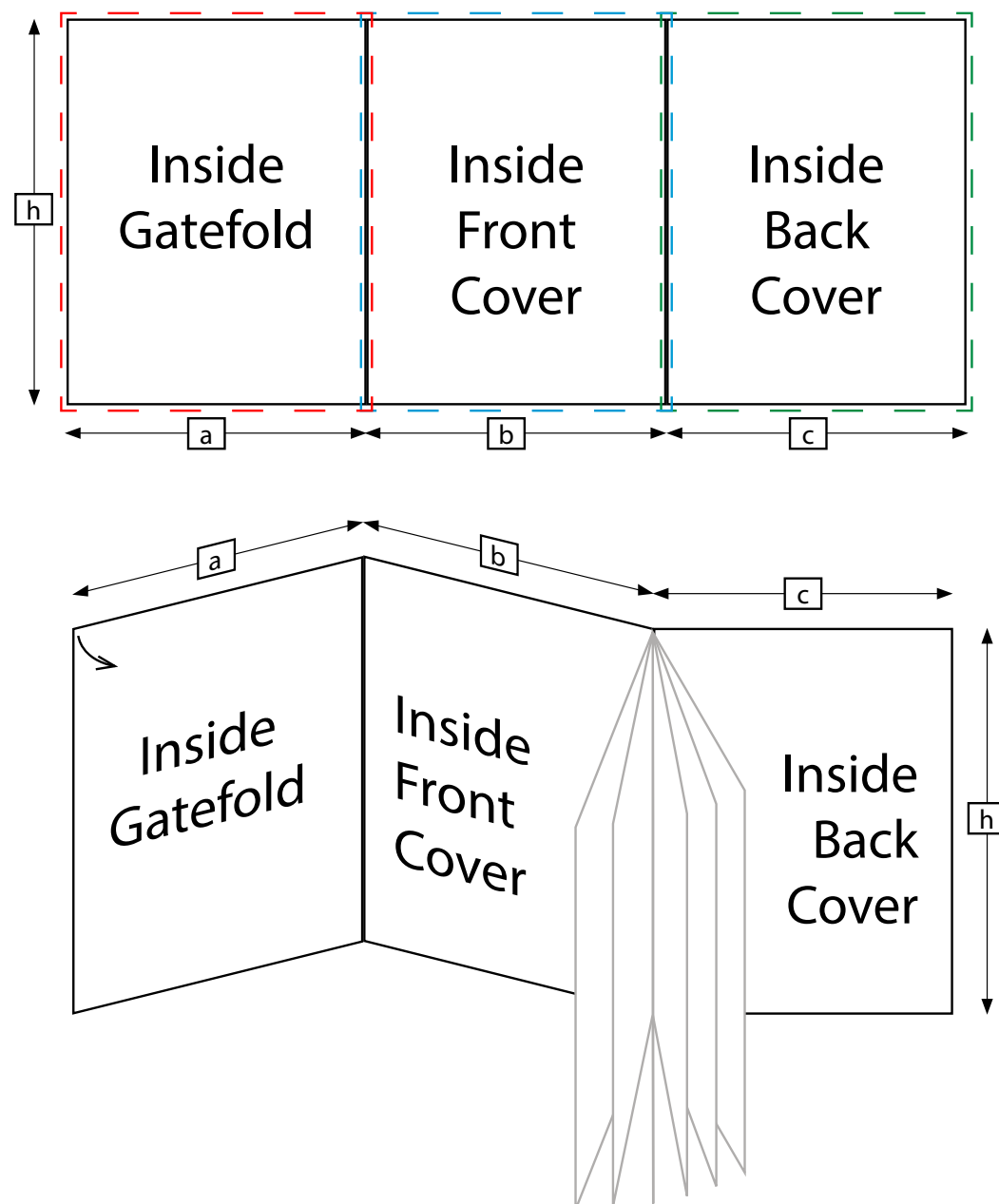
a = 220mm  
b = 225mm  
c = 230mm  
h = 270mm

Inside Gatefold = 226 x 276mm [a x h + 6mm bleed]  
Inside Front Cover = 231 x 276mm [b x h + 6mm bleed]  
if supplied as a spread = 451 x 276mm [(a + b) x h + 6mm bleed]

Inside Back Cover = 236 x 276mm [c x h + 6mm bleed]

**No live matter should be placed within 7mm of the trim**

icc profile should be based on Fogra 39L dataset, 300% TAC eg. ISO Coated v2 300% (ECI)



## Outside

Trim / fold sizes

a = 220mm  
b = 225mm  
c = 230mm  
h = 270mm

Outside Gatefold = 226 x 276mm [a x h + 6mm bleed]  
Outside Front Cover = 231 x 276mm [b x h + 6mm bleed]  
if supplied as a spread = 451 x 276mm [(a + b) x h + 6mm bleed]

Outside Back Cover = 236 x 276mm [c x h + 6mm bleed]

**No live matter should be placed within 7mm of the trim**

icc profile should be based on Fogra 39L dataset, 300% TAC eg. ISO Coated v2 300% (ECI)

